

**Apartment 2, Nexus, Roushill, Shrewsbury, SY1 1PT**  
£850 Per Month





Apartment 2, Nexus, Roushill, Shrewsbury, SY1 1PT

**£850 Per Month**

VIRTUAL TOUR AVAILABLE - Spacious and well-maintained one bedroom first floor town centre apartment located within the popular Nexus development on Roushill. Benefitting from one allocated and secure parking space.

Available: 06/09/25

## Description

Comprising: Spacious entrance hall with deep store cupboard, double bedroom complete with wardrobes, large open plan kitchen/living/dining area, kitchen appliances include hob, oven, dishwasher and washing machine, bathroom with shower over bath. Electric smart heating. Double glazing. EPC C.



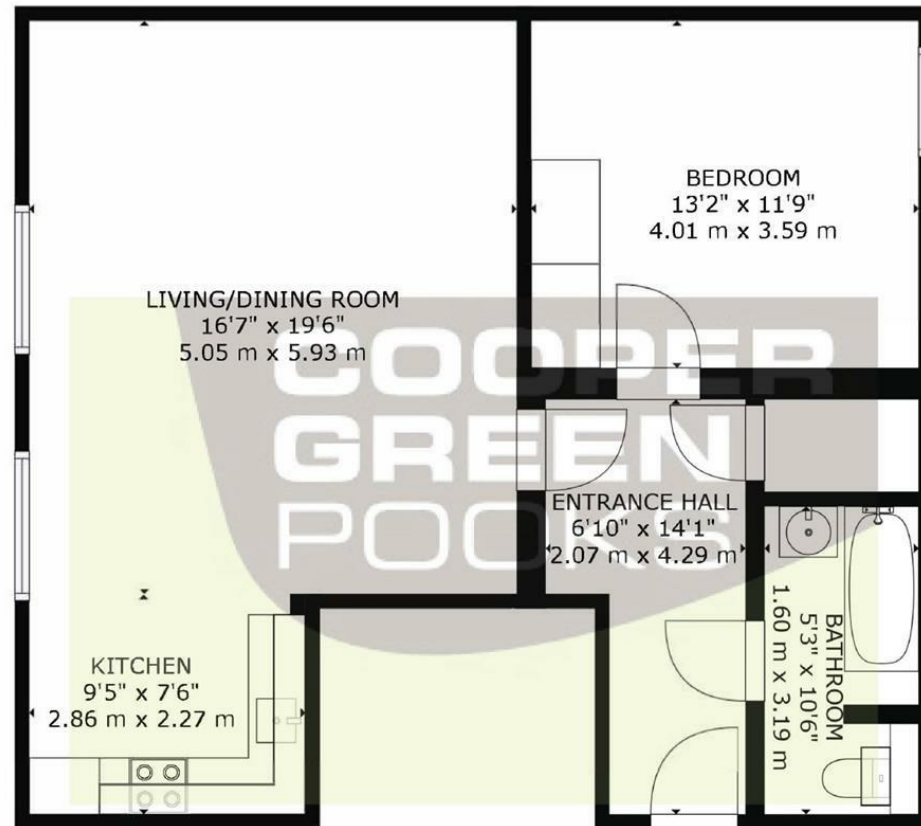
Unfurnished

Council Tax Band: B

Available: 6th September 2025

EPC: C

## Floor Plans



FLOOR 1

GROSS INTERNAL AREA  
FLOOR 1: 737 sq. ft, 69 m<sup>2</sup>  
TOTAL: 737 sq. ft, 69 m<sup>2</sup>  
SIZES AND DIMENSIONS ARE APPROXIMATE, ACTUAL MAY VARY.



These particulars, whilst believed to be accurate are set out as a general outline only for guidance and do not constitute any part of an offer or contract. Intending purchasers should not rely on them as statements of representation of fact, but must satisfy themselves by inspection or otherwise as to their accuracy. No person in this firm's employment has the authority to make or give any representation or warranty in respect of the property.